

First Announcement

“Geo-informatics Serve the Belt and Road”

International Summer School 2019

<http://gip.csu.edu.cn/chs/English.aspx>

August 18 – August 24, 2019



中南大學
CENTRAL SOUTH UNIVERSITY



地球科学与信息物理学院
School of Geosciences and Info-physics

The image shows the main entrance gate of Central South University. The gate is a large, ornate structure with two tall, decorated pillars and a central archway. The archway contains the university's name in Chinese characters. The background features a clear blue sky and lush green trees. The overall scene is bright and welcoming.

Welcome to Central South University!

*Join the 2019 Central South University
International Summer School - "Geo-informatics
Serve the Belt and Road" and have a great
& wonderful summer in Changsha, China!*

Background and Goals

The Belt and Road Initiative (B&R) is a development strategy initiated by the Chinese government to build a community of shared future for all humankind. In partner countries along the B&R, the geo-spatial information obtained by geodesy, GNSS, engineering surveying and remote sensing, has played a fundamental role for local economy development, ecological environment and disaster reduction and prevention. However, there are data gaps and technique challenges for partner countries along the B&R to use geo-spatial information serving for local economy development and dealing with resource, environmental and disaster issues.

China has achieved a lot in global mapping technology, geographic big data and earth observation satellites, including meteorological satellites, ocean satellites, resource satellites, HJ satellites, mapping satellites, high-resolution satellites and Beidou navigation satellites. To sharing the technology, knowledge and experiences on geo-spatial data/information obtaining, handling, analyzing and comprehensive application, the School of Geosciences and Info-physics of Central South University initiated the International Summer School with the theme of “*Geoinformatics Serve the Belt and Road*”.

The topics of course and communication of this summer school covers but not limited to the followings:

- 1) Geodetic technologies and deformation monitoring;
- 2) Collaborative observations and geohazards precaution;
- 3) Comprehensive remote sensing and resource environment;
- 4) Big data analysis and intelligent services.

Renowned experts from Hong Kong Polytechnic University, University of Calgary, Beijing Normal University, Tongji University, China University of Mining and Technology, China Earthquake Administration, Chengdu Institute of Mountain Hazards and Environment of CAS, Chengdu Polytech University, and Central South University are invited to deliver lectures on particular topics, respectively.

Central South University (CSU) is a national-level comprehensive university (TOP 15 in China) famed with geosciences, engineering, material and medicine. With 63 years history, the Geo-informatics (Surveying and Mapping Science and Technology) of CSU has developed to be a leading discipline in China, and has achieved a lot in surveying data processing and InSAR geodesy, resource and environment remote sensing and national geo-spatial analysis, big data mining and intelligent services, near-surface change monitoring as well as geohazard perception and cognition.

Eligibility

This school is open to qualified MA students, PhD students, and young teachers/researchers/engineers from all countries along the B&R. Applicants are required with basic capability and wishes as:

(1) Been educated with geo-information courses such as geography, geology, geodesy, engineering surveying, remote sensing, mapping, and geographic information system;

(2) Be familiar with geo-information related software such as ArcGIS, ENVI, CAD, and have experiences in data processing, mapping and spatial analysis;

(3) Are willing to serve better for environment safety, geohazards monitoring, disaster reduction, risk analysis and sustainable development along the Belt and Road;

(4) Be able to communicate in fluent English or Chinese (reading, speaking, listening and writing).

Time and Location

Registration time:

9:00am-23:30 pm, Aug.17, 2019

Course arrangement:

Aug.18, 2019 (Saturday) – Aug. 24, 2019 (Saturday)

- (1) Elementary Courses: basic knowledge and skills on geo-informatics.
- (2) Frontier Courses: State-of-the-art of geo-spatial theories, methods and applications.
- (3) Closing ceremony and qualified certification delivery:

Location:

Physics Building, the main campus of Central South University
Yuelu District, Changsha City, Hunan Province, P.R. China

Application guidelines (Please fill out the attached form)

The participant should send their application form and recommendation letters by E-mail before June 25, 2019. Please indicate “International Summer School for The Belt and Road” in the subject. Invitation letter for visa will be released before July 5, 2019.

Contact:

Dr. Yuqi Tang: geomatic@csu.edu.cn

Homepage:

<http://en.csu.edu.cn/>

<http://gip.csu.edu.cn/English/>

<http://gip.csu.edu.cn/chs/English.aspx>

TEL:

0086-0731-88836734/88879331

Fees and related issues

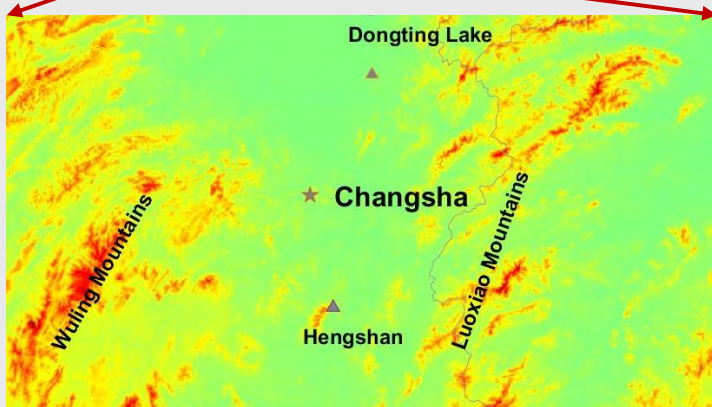
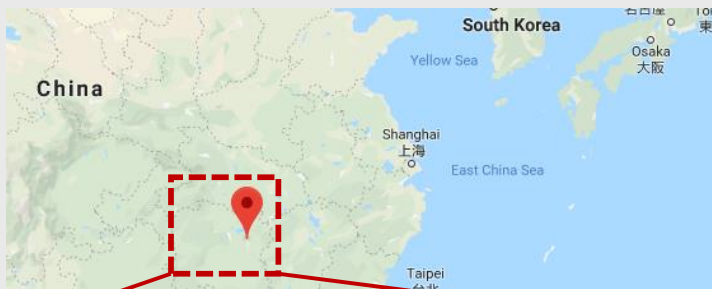
- (1) The summer school welcomes both officially enrolled students and auditors.
- (2) The CSU will provide free handouts and related study materials for both the officially enrolled students and auditors, and exempt them from tuition and fees. Officially enrolled students will be provided with fees on international transportation, local accommodations and student meals.
- (3) The qualified officially enrolled students who behaved nice and passed the examination will be awarded a certification document.

Enrollment Quota:

About 30 students, and open for both free application and government/institution recommendation. All applicants and recommend persons will be evaluated on personal capability, and will be potentially accepted referring to national quota balance.

About Changsha, China

Changsha (Chinese: 长沙, Changsha dialect: Tsanso) is the capital and most populous city of Hunan province in the south central part of the People's Republic of China. It is part of the Chang-Zhu-Tan city cluster or megalopolis.



Changsha is located in the Xiang River valley plain, bordering on Luoxiao Mountains on the east, Wuling Mountains on the west, edging in Dongting Lake on the north and bounded on the south by Hengshan Mountains. Changsha has a history of more than 3,000 years. Changsha was the capital of Changsha State in the Han Dynasty (206 BC – 220 AD), and the capital of the Chu State (907–951) in the Ten Kingdoms period. Changsha is an important city with historical and cultural relics. It is among the first group of Chinese cities which were selected as famous historical and cultural cities in the country and allowed to open-up to the outside world.

Changsha is steeped in time-honored traditions and historical spots. There are also many natural scenic spots, including the Mount Yuelu which is pregnant with beauty and vitality, the Xiangjiang River that flows through the whole city from south to north with the picturesque Orange Isle quietly lying in it. Changsha is also the seat of many ancient schools and academies.



Paste your GPA (undergraduate and master) here or list your publications and put the PDFs as e-mail attachments: